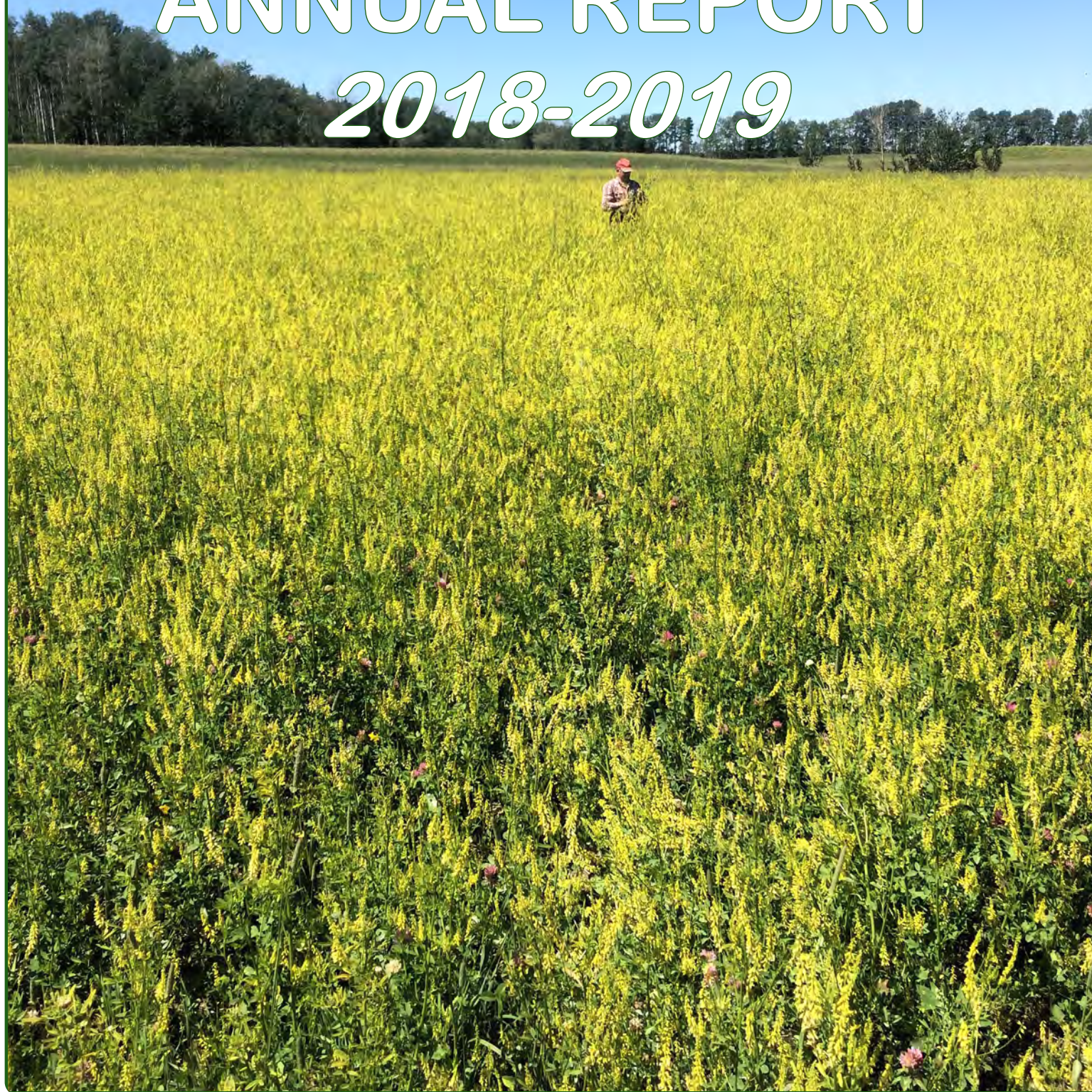




Grey Wooded Forage Association

*Creating an Awareness of Forages*

# ANNUAL REPORT *2018-2019*





## Table of Contents

Report from the Chair	Page 3
Our People	Page 4
Office report	Pages 5-6
Ag Field Specialist Report	Page 7
Projects	Pages 8-10
Events	Pages 11-12
Partners	Page 13
The Blade	Page 14
Thanks to Our Supporters	Page 15
Space for notes	Page 16
Annual General Meeting—Agenda & Minutes	Pages 17-20
Special Resolutions	Page 21
Bylaws	Pages 23-25

---

The Grey Wooded Forage Association is a producer-driven non-profit society,  
registered with the Province of Alberta on July 13, 1984.

We work in six Central Alberta counties: Wetaskiwin, Ponoka, Lacombe, Red Deer, Mountain View and Clearwater.

Our office is located at 5039—45 Street, Rocky Mountain House, AB

Phone 403-944-2645 | Mail PO Box 1448, Rocky Mountain House, AB T4T 1B1

Business email: gwfa3@telus.net | Field services email: gwfa5@telus.net

Find us on the web: [www.greywoodedforageassociation.com](http://www.greywoodedforageassociation.com) and on Facebook, Twitter and Instagram

---

## Mission and Vision

### Our Mission:

“To promote environmentally and economically sustainable forage and agriculture practices.”

### Our Vision:

“The community is engaged in regenerative agricultural production methods.”

**COVER PHOTO:** Summer intern Erin Willsie snapped this image in 2018 of GWFA Treasurer Vance Graham walking through the pollinator plot on his place in the Pleasant Vale area, southwest of Rocky Mountain House. The sweet clover was clearly the most successful of the varieties in the package.

---

## Message from the Chair

I would classify this past year as a rebuilding year. We had lost both our Office Manager and Ag Field Specialist the previous year so entered the year with out any staff and short three directors. Fortunately, Brenda Kossowan, who had previously published the Blade for the GWFA, stepped forward and offered her services on a part-time basis as Office Manager. Then were we fortunate to recruit highly competent and hard working Erin Willsie as our Summer Technician. Between the two of them they kept the ship afloat. We wrapped up a couple projects and nursed along the rest. Brenda then joined as full time Office Manager and things only got better. Finally in November we were able to have Greg Paranich join us as our Ag. Field Specialist. Greg has a strong background in the agriculture. If that was not enough we were three directors short throughout the year, however you had a strong motivated board and I commend them for their service this year.

I would like to thank our sponsors, both public and private, especially Alberta Agriculture whose support enables us to exist and provide research and education for our members.



A subsequent section in this report elaborates on those who sponsored and provided support for the GWFA.

The GWFA held or assisted in a number of workshops and seminars this past year and Greg has covered those in his report.

Your association is back fully staffed and ready to resume a full complement of projects and seminars. We have outlined a number of projects focusing on soil health and carbon sequestering. My goal is that grass farmers finally get recognition and reward for the carbon we sequester in our pastures and haylands. We do not have the resources to research the benefits of cattle grazing on grasslands as an offset to the methane released by cattle. This project has been undertaken and we will look forward to the results in a year or so.

I enjoyed the past year as your chair and look forward to working with the Board and new chair in 2019-20.

*Thank you,  
Gil Hegel*



**2018-19 GWFA Board of Directors (Clockwise from upper right):**  
 Deb Skeels (Secretary), Gil Hegel (Chair), Benz Rufenacht, Greg Campkin, Ken Ziegler (ARECA rep),  
 Jess Hudson, Dallas Jenson. Missing: Vance Graham (Treasurer), Alex Neal and Maria Champagne.

# Our People

## Founding Board, July 13, 1984

George Reid, Chair	Rocky Mountain House
Wayne Carr	Bluffton
Harvey Sharp	Winfield
Dave Willows	Winfield
Paul Pritchard	Rocky Mountain House
Leon Godkin	Rocky Mountain House
Jim Bauer	Rimbey
Lorne Turner	Eckville

## Managers/Specialists

Jim Bauer	1986-1994
Kyle Greenwood	1995-1999
Maria Fayyaz	1999-2000
Albert Kuipers	2001-2014
Ginette Boucher	2015-2018
Devin Knopp	2016-2018

---

## 2018-19 Board and Staff

Title	Name	Residence	Entry year
Chair	Gil Hegel	Olds	2017
Secretary	Deb Skeels	Rocky	2018
*Treasurer	Vance Graham	Rocky	n/a
Director	Greg Campkin	Sundre	2018
Director	Jess Hudson	Bashaw	2018
Director	Dallas Jenson	Bluffton	2018
Director	Benz Rufenacht	Bluffton	2016
*ARECA rep	Ken Ziegler	Rocky	n/a
*Ex-officio	Maria Champagne	Bluffton	n/a
*Ex-officio	Alex Neal	Caroline	n/a
Business Manager	Brenda Kossowan	Leslieville	n/a
Ag Field Specialist	Greg Paranich	Blackfalds	n/a
Summer Technician	Erin Willsie	Caroline	n/a

*\*Denotes appointed directors who are entitled to vote at board meetings on all but financial motions.*

## Office Report

By Brenda Kossowan

The ancient philosopher, Confucius, is purported to have pronounced a curse: May you live in interesting times.

Well, thanks dude. It has been interesting, but it would be somewhat misguided to call the past year a curse. Truly, however, it has been challenging on every front.

Forage producers were challenged with a hot growing season that burned pastures and hayfields off in August, creating a domino-style series of whammies that continues to reverberate. Statistics Canada has reported that the past season was one of the poorest on record across the board. Cliff Jamieson, Canadian Grains Analyst for *Progressive Farmer*, wrote on May 30 that farm cash receipts in 2018 fell by roughly 45 per cent over the previous year – the biggest drop since 2006.

While GWFA members struggled to salvage forage crops and feed their animals, the association itself went through a challenging period of restructure, brought about by the loss earlier in the year of both staff. Forage and Livestock specialist Devin Knopp tendered his resignation late in winter, while Manager Ginette Boucher gave her notice early in May.

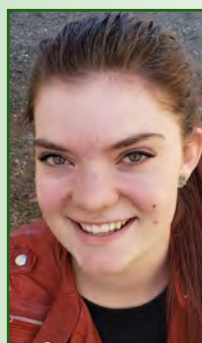
Two new staff—an interim manager and a summer

intern, along with a board comprised largely of new directors—were charged with maintaining operations and keeping the association moving forward. We owe a great deal to the many people who helped us along the way, including staff at Alberta Agriculture and Forestry, staff and members of sister associations from other regions of the province and staff from all six of the municipalities who fall within our region. Their leadership and experience were invaluable to Erin and I as we muscled our way through the first few months of the year, ensuring that ongoing projects were continued and that the association continued to provide its members and greater community with the service they had come to expect.

We help organize and publicize a couple of pasture walks and joined with some of our sister associations in setting up workshops with soil scientist Jim Gerrish.

Erin returned to school late in August, leaving a big vacuum where a field specialist was badly needed. Recruitment began in earnest and we eventually connected with a handful of candidates who showed some real promise. Of the four finalists chosen for interviews,

*(continued on next page)*



## 2018-19 Staff

Clockwise from the upper left corner are Business Manager *Brenda Kossowan*, Agricultural Field Specialist *Greg Paranich*, Summer Technician *Erin Willsie* and Part-time Bookkeeper *Heather Lyon*—the longest-serving member of our team.

Brenda and Erin joined GWFA in May of '18 and spent much of the summer on a steep learning curve, with guidance from Heather and from former staffers and with the support of a strong and dedicated Board of Directors.

Brenda brought her background as a journalist specializing in agriculture and politics, while Erin was hired as a summer student who had just completed her first year as a science major. Erin was valued for her exceptional organizational skills and outstanding work ethic.

Greg joined the team in November, shifting our research and extension programs into road gear, despite falling ill just a few days after assuming his new role. Greg brought a sincere interest in forage and livestock production along with years of expertise honed through working as a certified crop advisor and agricultural fieldman.



## Office Report, continued from previous page

The hiring committee determined that Greg Paranich was likely the best fit and he seemed mighty keen on getting involved with GWFA.

He had a rough start, though, falling gravely ill in November, just days into his new job. Thank God and good medicine, he was back on his feet in a few weeks and, by early January, our new Agricultural Field Specialist was once again firing on all eight cylinders.

With support from the board, Greg has charted a course that will include a number of new projects and events, outlined later in this report. He has been taking steps to become a certified Environmental Farm Plan technician, picked up the work the Ginette Boucher had been doing during her tenure as manager. Meanwhile, in the absence of a certified technician, we offered a series of EFP workshops through the winter in collaboration with our partners at Clearwater, Mountain View and Lacombe Counties.

The Lacombe workshop, however, could not proceed because of issues arising from the provincial election. Lacombe had combined its EFP workshops with information on the Canadian Agricultural Partnership. The CAP session required participation of experts from Alberta Agriculture and Forestry (AAF). However, under the direction of their senior management, public servants were advised that, through the provisions of the Caretaker's Convention, their public activities would be strictly curtailed throughout the election period.

That directive prevented us from publishing any AAF and AFSC materials in *The Blade* and meant we could not put on any events which would require the

participation of our key resource people, including specialists like Grant Lastiwka, Barry Yaremciio, Karin Lindquist, Andrea Hanson and Harry Brook, who have played such important roles in helping the producers we serve with their key decisions.

We were informed early in June that the directive was finally being lifted, just in time to make sure that Andrea and Grant would be able to speak during our Annual General Meeting—either in person or via video.

Our 2018-19 Chair, Gil Hegel, has written a letter to Hon. Nathan Cooper, Speaker of the Legislature and copied to Agriculture and Forestry Minister Devin Dreeshen asking for an investigation into the directive in hope that something like this does not happen again.

In the meantime, I am grateful to have all of those good people back in full swing as we move into what looks to be another challenging year, even with the great rain we have had to kick off the growing season.

I can't say it enough: Thanks to every person, agency and business who kept the faith and offered their support to GWFA over the past year. We couldn't have done it without you.

By the way, the so-called Confucius curse cannot be properly attributed to China's ancient philosopher and may actually be rooted in a more recent phenomenon; British politics in the late 19th Century. A version of the "backhanded blessing" has also been connected with 18th-Century philosopher Georg Wilhelm Friedrich Hegel of Germany, whose connection with our 2018-19 chair has not been established.



Brenda Kossowan Photo

## Ag Field Specialist Report

By Greg Paranych, Ag Field Specialist

The 2018-19 year for GWFA activity, with limited manpower resources, has been maintained to continue the engagement of our membership and the agricultural community.

I was pleased to join the Grey Wooded Forage Association on November 5, 2018.

As the Agricultural Field Specialist, I spearhead extension activities and applied research and demonstration projects, promoting sustainable forage, livestock and agricultural practices and enhancing soil health. I feel we must always keep in focus the producers' business challenges, needs and profitability, and develop strategies with the best sustainable model for their operation.

With my later start in the year, I immediately began to review the past season and map out future activities for the balance of the fiscal year and into 2019. A few circumstances arose to deliver some initial set backs. For starters, on November 21, I experienced a heart episode that sidelined me into the New Year. Fully recovered from that, the planning and engagement of members resumed.

Adversity seemed to be the theme throughout 2018 and for livestock producers it started in March and April when Old Man Winter would not let go. Unexpected levels of winter feeding due to a harsh winter and extended winter-feeding conditions that continued well into April brought stored feed stocks down to zero levels. With no carryover inventory left, it fell to the 2018 hay crop to recoup the deficit. A very dry spring led into a drier summer with drought becoming an official status for much of Alberta. With only about 30-50 per cent of expected rainfall by mid-summer, hay crops reflected the same yield deficit. With required feed in serious shortfall, the chances of restocking feed inventories with replaced carry over vanished. Priority number one was to budget the scarce feed available and the number of cows to feed over winter. Prices for feed skyrocketed by late summer and held record-high levels through most of the winter. Fall culls were deeper than anticipated. The use and sourcing of alternative forages and feeds was becoming the hot topic of the day. One response was the "Feed What You Need" series of workshops spearheaded by Alberta Agriculture and in which GWFA partnered. It ran through the late fall of 2018 to address proper nutritional management with atypical cow diets.

Considering the dry soil conditions, we went into winter with the anticipated challenge of adverse conditions would certainly continue into spring 2019. In preparation for that inevitability, we published articles in *The Blade* with timely information to encourage planning entering a stressed forage environment. We refocused our grazing meeting with Wetaskiwin partners to address the challenges of the impending dry spring with a "Grazing Through Adverse Conditions" workshop in Winfield. The Alberta Agriculture panel of speakers presented information for producers to develop their own strategies for their feeding and grazing plans. Topics of climate situation and overview, pre-grazing nutrition, and grazing strategies to get Back on track proved to be the exact information producers were looking for. Plans to replicate the same workshop in a series with the county was well received by the speakers as well as potential county partners.

As we began to gain momentum, the provincial election was called, and with the dropping of the writ came the "Caretakers Convention." All programming that relied on Alberta Agriculture and Forestry personnel was curtailed, impacting our intended "Grazing Through Adverse Conditions" series down to one from potentially four partnered events. Environmental Farm Planning workshops with an

Alberta Agriculture and Forestry component were cancelled. Going forward without these constraints, our activities and planning has moved in a very positive direction.

The workshop, seminar and field day events are very significant components of our GWFA activities in delivering timely and relevant information to producers. We rely on your feedback to help us formulate the best focus on topics to present and the best vehicle to deliver it to the producer. Turnout support for events is the validation that we got it right. Some areas of forage and livestock sustainability to be considered are: Pasture weed walks; power fencing basics and innovations; value-added forages including cover crops, legume pastures; high quality and specialty hay; export forages; seed production. Livestock topics regarding animal husbandry with hybrid genetic technology and animal welfare topics including veterinary resources are also under consideration. We eagerly seek your valued feedback on these topics and of course, other areas of concern.

The GWFA will continue the existing Pollinator, Canada Thistle Stem Mining Weevil and Hardy Alfalfa projects. The 3D Fence project was concluded with the end of the 2017-18 winter.

New projects and directions in 2019 will see increased emphasis on soil health with the Soil Health Benchmark Sampling program and soil health components embedded in various field projects and seminars. Annual forage management practices, bio-char soil amendments, pasture renovation, and potentially a sod-seeded, high-legume pasture project will add to the existing GWFA block of projects. The Knowledge Translation and Transfer (KTT) extension activities will also continue with field events as well as seminars and workshops. 2019 will be a full dance card to manage!

Moving ahead into 2019 there are many exciting possibilities for promoting sustainable forage, livestock, and soil management practices. I appreciate the continued support of the Board of Directors, my co-workers, members and our many government and industry supporters.

I subscribe to an African proverb: *"If you want to go fast, go alone. If you want to go far, go together."*

I would like the Grey Wooded Forage Association to go far. I look forward to going forward together.



**Education Agriculture Tour/Erin Willsie Photo**



# PROJECTS

---

## Completed in 2018

**3-D Fence:** This project was completed in 2018 with the conclusions that the fence models were normally effective in protecting hay yards from elk predation under moderate winter conditions. However, in periods of high natural feed stress (deep snow and/or severe cold), the elk persisted through the electric fence into the feed sources to survive. The conclusion was that to ensure exclusion of elk from the hay yards, one fencing to the same standard as that on an elk farm. Partners in this project were GWFA, Sun Dog Solar, Lone Star Ranch Sales, JB Ranch, Otto and Lea Seidel and Rene and Lorna Poirier.



---

## Ongoing projects

**Pollinator Project:** The provision of pollinator seed mixtures to participating producers (via Syngenta) encouraged the planting of plots to support bee foraging through the summer and late season. Sites were followed up to ensure good establishment occurred.

GWFA is a partner in Syngenta Canada's Operation Pollinator program, co-ordinated in Alberta by The Agricultural Research and Extension Council of Alberta (ARECA). GWFA has three producers involved in the project, Kim Nielsen, Vance Graham and Alan Schamber. Operation Pollinator is focused on research and partnerships to promote the health and well-being of bees and other pollinators given their essential role in agriculture and nature.

The program's mandate is to support activities that enhance biodiversity, habitat and other practical initiatives that contribute to healthy pollinator populations.

The program originated in the United Kingdom and has since been expanded to more than 13 countries around the world. It includes both on-farm and off-farm components.



*(Continued on next page)*



## Ongoing projects, continued



**Canada Thistle Stem Mining Weevil:** The purpose of this project is to determine whether stem mining weevils are a viable alternative to chemical control of Canada Thistle.

The project was started in 2017 with installation of parent weevils at a variety of selected sites throughout Alberta, co-ordinated by regional research groups including the Grey Wooded Forage Association.

Within our region, two establishment sites were set up in Mountain View County, and we established weevil colonies in thistle patches at four additional sites in the fall of 2018, two with Medicine River Watershed Society and two with Lacombe County.

During site inspections in the summer of 2018, technicians found proof of larvae, indicating that the parent stock had successfully established and were producing eggs. All sites will be inspected again in the summer of 2019 to determine their level of success.

**Hardy Alfalfa:** This is a long-term project co-ordinated with Agriculture and Agri-Food Canada's Lacombe Research Centre on Doug and Deb Skeels's ranch northwest of Caroline. The purpose is to identify older and less common strains of alfalfa that may have persistence and longevity in a hay-grazed management system and comparing relative production within the group.

The project was started in 2010 using six different varieties: Tap Root, Lundgard Falcata, Rhizoma, Anik, MV and Yellowhead. Research to date has found a variety of responses among the varieties to climatic stresses, such as the drought of 2018. The Yellowhead, which had not performed well in previous years, showed significant performance during the extreme drought conditions of the 2018 growing season.



2017 comparisons	Kg/Ha			
	Ungrazed Alfalfa Production		Grazed Alfalfa Production	
	July	September	July	September
<b>Alfalfa Type</b>				
Yellowhead	1729	360	2931	799
MV	1636	661	2776	1091
Anik	1989	547	3839	555
Rhizoma	2485	744	2487	1365
Lundgard Falcata	3057	884	2722	687
Tap Root	2054	1968	1802	1757

\*Not analyzed statistically

## New projects in 2018 and beyond

Just as it raised the bar in grazing management 35 years ago, the Grey Wooded Forage Association is taking a seat at the front of the bus on improving soil health. Starting in the spring of 2018, the association has joined in a variety of projects focussed on soil health and carbon sequestration.

We will conduct some projects in house and will share the work with other groups on additional projects.

---

### Soil Benchmarking Sampling 2018-2023

Led by the Chinook Agricultural Research Association, this project has province-wide participants gathering measurements to monitor soil characteristics: Soil nutrition, organic matter, salinity, texture, bulk density and water infiltration rate. GWFA will sample 20 sites each year for three years, with each site to be resampled in two years. Sites chosen for 2018 and 2019 will both be sampled in 2019.

### Bio-Char 2019 and beyond

This project will investigate the impact on soil structure and soil health conditions with the application of Bio Char (Cool Planet product) to perennial or annual crop stands. Measuring changes in soil water holding capacity, increased biomass production and subsequent improvement of Carbon capture are areas we will document and compare to untreated checks. Improved soil health and biomass production of annual and perennial crops would contribute to the mitigation of climate change factors.

### Annual Forages Intercropped with Cereal Silage 2019

In partnership with Clearwater County, Performance Seed, and Benalto Ag Services this project will evaluate BMP for successful silage and cover crop combinations. Feed value deferred grazing potential, & soil health benefits will be measured and monitored. Data will be shared during in-field tailgate meetings and winter seminars.

### Regenerative Pasture 2019 and beyond

Regenerative pasture technology will be applied to demonstrate forage restoration techniques and options in depleted pasture along the Red Deer River. We will determine options to implement (including interseeding, fertility, fence redesign, pasture renovation, bale grazing rehabilitation). Monitoring pasture progression as a model for KTT (knowledge translation and transfer) development will continue as practices are implemented. We will also investigate ALUS qualification for portions of the recommended restoration.

### Carbon Sequestration on Alberta Rangeland 2019 and beyond

An ARECA proposal approved in principle; GWFA will take part in sampling soil at a variety of locations. The project is described as engagement and extension geared to providing baseline information to producers and allowing them to track their daily management practices and field information including soil and site conditions.

### High Legume Pasture Retrofitting and Sod Seeding 2019

This proposed project is awaiting funding from the Canadian Agricultural Partnership. If approved, this project aims to investigate and develop the best methods in upgrading depleted grass pastures to high legume pastures, with predominately non-bloat legumes to manage bloat risk. Sod seeding techniques will be used to establish new forage into intentionally stressed stands in late October for the next spring emergence.

---




# GWFA Events

One of our favourite ways to get our messages out is to set up events where we can rub elbows with producers and show off the work we do.

During the 2018-19 year, we hosted a variety of workshops and pasture walks to give producers a look at what's happening on members' farms and to give them a chance for some informal chats as well as high-level discussion with experts. Our in-house event package included a pasture walk on Amy Leitch's goat farm and a visit to Ken Ziegler's Kura clover site.

Through our partnership with other members of ARECA (Agricultural Research and Extension Council of Alberta), we were able to bring Jim Gerrish to Caroline for a day, opening in the morning with a classroom session and then wrapping up with a walk through the pastures at Doug and Deb Skeels's place.

Later in fall, we brought private and government experts to the Arbutus Hall to talk about options for getting cattle through the winter when hay is in short supply.



**Grey Wooded Forage Association**  
Creating an Awareness of Forages

**FEED WHAT YOU NEED**  
**SURVIVE WINTER FEEDING CHALLENGES**


Arbutus Community Centre, Thursday, November 29, 10 am to 3 pm

Speakers from Alberta Agriculture and Food will address current conditions, and then offer strategies for using straw-based rations to keep your animals healthy through the winter.

A nutritionist from Blue Rock Animal Nutrition will discuss feed sampling, testing and analysis, followed by a short course on using an online feed analyzer and calculator.

Please pre-register with GWFA  
Email [gwfa3@telus.net](mailto:gwfa3@telus.net) or  
Call 403-844-2645

Admission is \$30 for GWFA members and \$40 for non-members including lunch, coffee and fresh cinnamon buns from Jan's Kitchen




**Grey Wooded Forage Association**  
Creating an Awareness of Forages

**PASTURE WALK**

Friday June 22 6:00-9:00 pm

**Herd Rotational Grazing Management:**  
**What works and What doesn't**

Space available please pre-register by June 20 with the GWFA office at:  
403-844-2645 — [gwfa3@telus.net](mailto:gwfa3@telus.net)

*\*Biohazard measures in place\**



**TALKDIRT2ME**  
SOIL HEALTH CLINIC WITH  
**JIM GERRISH**

August 10, 2018, 9 a.m. to 5 p.m.

Hosted by The Grey Wooded Forage Association  
\*LUNCH AND BIOSECURITY BOOTS PROVIDED\*

Members: \$60/person  
Non-Members: \$70/person

9am — Classroom and Lunch at Caroline HUB  
1pm — Pasture walk near Dovercourt



Contact GWFA by August 7  
to reserve your spot  
Limited walk-in available  
Phone: 403-844-2645 | Email: [gwfa5@telus.net](mailto:gwfa5@telus.net)

**Tour Partners:**




**Grey Wooded Forage Association**  
Creating an Awareness of Forages

**Kura Clover Walk**  
**at Ken's**

July 25th 2018  
7:00pm—9:00pm

Meet at the GWFA office,  
5049, 45 St., Rocky Mountain House,  
and then follow the leader to the site!

**Pre-register by noon on July 24**

Phone: 403-844-2645 or  
Email: [gwfa5@telus.net](mailto:gwfa5@telus.net)



# Partnered Events

Besides the events we hosted on our own, Grey Wooded Forage Association joined with its partners in hosting, setting up displays and presenting seminars at a variety of additional events. Those included three high-value workshops organized through the Red-Bow Partnership, Environmental Farm Plan workshops and presentations at additional workshops hosted by our county and commercial partners. We continue to work with these partners to share new information and technology with producers to help them improve their management systems.

Please join us

**Weeds and Pasture Management**

Wednesday April 17  
6:00pm to 9:00pm (light supper)

**Spruce View Community Centre**

Topics Include:

- How to ID weeds
- Weed lifecycle and how they spread
- How to prevent establishment
- Pasture Management Fundamentals

Register for this FREE event  
On event tickets available

*ladies*  
**LIVESTOCK LESSONS**

Hosted by the Red-Bow Agricultural Partnership

SAVE THE DATE  
REGISTER

The Red-Bow Agricultural Partnership Presents

**WATER & Agriculture**

Con

**The ENVIRONMENTAL FARM PLAN**

*Unearth your farm's Hidden Treasures and Lurking Hazards*

A new or updated EFP will provide credible information that can help your operation in so many ways:

- Protect the natural resources on your farm
- Give you the tools needed to capture cash through federal and provincial funding programs
- Create an inventory of your farm assets for succession planning
- Help you identify and manage potential hazards
- Show the public that you care about the legacy you are building for future generations
- Find resources to help you reach the goals identified in creating your EFP

**We're here to help!**

Grey Wooded Forage Association and its partners will host the following workshops, free of charge, to help you complete your new EFP:

**Clearwater County**  
Tuesday, Feb. 5, 1-5 p.m.  
Rocky Learning Centre  
50 Street, Rocky Mountain House, AB  
Register with GWFA at 403-844-2645  
with Clearwater County Agriculture and

**Mountain View County**  
Monday, March 4, 10-3 p.m.  
Mountain View County Building, Didsbury  
10 - 1408 Twp. Rd. 320  
Pleased register with: GWFA at 403-844-2645,  
Mountain View County,  
403-335-3311, ext. 163  
Or via Eventbrite: [efpworkshop.eventbrite.ca](http://efpworkshop.eventbrite.ca)

**West Country Ag. Tour**

August 23, 2018

7:30am-4:30pm

Features:

- Clearwater County Trial Plot
- Leitch Family Production and management of goat farming
- Range Road Enterprise Demonstration of A and firewood processing
- Grizzly Bear Project Korth Family Farm and bear expert

Register early as space is limited  
403 846  
Registration deadline

Cost is only \$35 per person for fast, lunch and lots of talk

**Benalto Ag**

**Grower Meeting**

Forage Options and Alternatives to C  
Your Bottom Line

February 20, 2019  
Condor Community Centre  
10:30am to 3pm  
Lunch Provided  
RSVP by Feb 12, 2019  
Call 403-746-2012

Learn About Forage Corn Options and Agronomics  
Alternative Forages  
Forage Fertility Options  
Product Updates and Discounts

The Red-Bow Agricultural Partnership Presents

FEBRUARY 7 - 2019  
**RANCHING OPPORTUNITIES**

REGISTER ONLINE AT  
[www.redbowag.com](http://www.redbowag.com)

\$50 registration fee (student rate)  
Includes lunch, coffee and trade  
Register by February 1st, 2019

Contact Daniela at Mountain View County for more information:  
Ph: 403-335-3311 Ext. 204  
or [darcher@mvccounty.com](mailto:darcher@mvccounty.com)

THANK YOU TO OUR SPONSORS

RED-BOW  
www.redbowag.com

**Get the Dirt on Soil Health and Carbon**

Are you doing everything possible to build and manage your soil?

Bring your soil samples in to specialists Kris Nichols & Kim Cornish. See and hear how the things you do above ground affect what happens below the surface.

Choose from either of two sessions—or come to both!  
Space will be limited, so please register early.

Tuesday, June 18: 5 p.m. to 8:30 p.m.  
Cottonwood Hall, 3005 Twp. Rd. 352  
\$30 for GWFA members, \$40 for non-members  
Please register online at [www.eventbrite.ca](http://www.eventbrite.ca)

**Lacombe County**

Wednesday, June 19: 10 a.m. to 2:30 p.m.  
Lincoln Community Hall, 41319 Hwy 792 (Lincoln Road)  
\$30 for GWFA members, \$40 for non-members  
Please register online at [www.eventbrite.ca](http://www.eventbrite.ca)

**Grey Wooded Forage Association**  
Creating an Awareness of Forages

**FOOD WATER WILDFIRE FOUNDATION**

**Red-Bow to Climate Solutions**





# Partners



Collaboration is truly the key to GWFA's ability to provide high-calibre research and events to its members and the broader agricultural community. Our involvement with ARECA, AFIN, ALUS and AFAC puts us at the table with people who share the values upon which GWFA was built and who are dedicated to ensuring that those values are maintained. Our partners in ARECA and Red-Bow work with us to develop research projects, host events and share resources that help us provide the timely and reliable information to the livestock and forage community.

## ARECA

The Agricultural Research and Extension Council of Alberta is made up of eight associations throughout the province, including GWFA. It is our gateway to group insurance, political influence and provision of the Environmental Farm Plan.

## AFIN

The Alberta Forage Industry Network provides common ground for organizations and businesses involved with growing grass, from providing turf for golf courses to orchestrating research for hay producers.

## ALUS Canada

Alternative Land Use Services Canada is a Weston family initiative aimed at helping agricultural producers protect and preserve wildlife habitat along the rivers and wetlands on and adjoining their properties. ALUS operates in three of the counties that GWFA Serves: Red Deer, Lacombe and Mountain View.

## AFAC

Alberta Farm Animal Care is a producer-driven animal welfare group, founded in Alberta and a model for the rest of the world. AFAC aims to help producers take the best possible care of their livestock and operates a 24-hour emergency line that people can call during a crisis involving livestock, such as a collision, fire or other calamity on the farm.

## Red-Bow Agricultural Partnership

Named for the two river basins that it intersects, Red-Bow was formed between a group of counties and agricultural associations in Central Alberta to host seminars aimed at improving economic and environmental sustainability. Red-Bow hosted a Water & Agriculture conference at Crossfield in November, Ladies Livestock Lessons near Airdrie in January and Ranching Opportunities in Olds in February.

# The Blade

The GWFA's monthly newsletter set the standard early on for reporting internal research and extension activities as well as providing articles of interest from outside sources. Page counts have risen from 16 pages per issue to 20 and 24 in some months.

Publication did fall behind schedule in the later part of the year and there had been discussion on the previous board of cutting back to once every two months rather than monthly. However, after reviewing the value that The Blade holds with our members and supporters, the 2018-19 board decided to continue with a monthly publication.

The May issue for 2018 was missed to accommodate preparations for the Annual General Meeting and that trend will continue in 2019 with staff focussing their efforts on the 2019 AGM and other spring work.





# Supporters

The Grey Wooded Forage Association operates on the good will of a huge contingent of supporters, including government and private businesses. While their fields of endeavour may be broad and diverse, they share an interest in helping organizations like ours serve their taxpayers, clients and customers.

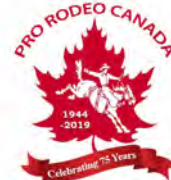
Alberta Agriculture and Forestry



To all of our supporters:  
You provide us with the  
funding, services and  
expertise that help our  
operations thrive. *We can  
never thank you enough!*



Evergreen



WOLSELEY  
INDUSTRIAL GROUP



GREEN EARTH  
NUTRIENTS LTD.



Vald, Jones & Vald Auction Co. Ltd.  
Rimbey AB



LACOMBE  
COUNTY



Staldren®  
Cleaner, Drier, Fresher barns



Mountain View  
COUNTY

NOTES



*Information for*  
**2019 Annual General Meeting**

- . **Agenda**
- . **Minutes**
- . **Resolutions**
- . **Bylaws**



# Grey Wooded Forage Association

---

*Creating an Awareness of Forages*

## **AGENDA**

**Annual General Meeting—June 13, 2019**

**Westerner Park, Red Deer**

1. Call to order and welcome from the Chair
2. Review of Agenda
3. Minutes from 2018 AGM
4. Video Presentation
5. Financials
6. Resolutions
7. New Business
8. Election
9. Adjournment

*All members of the 2019-20 board will be  
requested to step outside for a photo.*



## Annual General Meeting Minutes

Dovercourt Community Centre  
May 11<sup>th</sup>, 2018

Chair: Amy Leitch

In Attendance: Cy Newsham, Vance Graham, Andrew Ritson-Bennett, Jason Bradley, Gil Hegel, Maria Champayne, Ken Ziegler,

Absent: Benz Rufenacht, Ted Chastko,

Call to Order: 7:14pm

Introduction of Board of Directors

Additions

Additions to Agenda

Request to add item to New Business to explain the loss of both staff.

Adoption of Agenda: Doug Skeels made motion to adopt agenda, John Reid 2<sup>nd</sup>, passed.

Review and Acceptance of 2017 AGM minutes

Given time to read the minutes individually, Deb Skeels made motion to adopt the 2017 AGM minutes, Kristen Ritzen-Bennett 2<sup>nd</sup>, passed.

Reports

2017/18 Financial Report given by Vance Graham

2017 Auditors Report

John Reid represented auditors committee, no questions

John Reid made the motion to accept 2017/18 Audit Report, Chris Sande 2<sup>nd</sup>, passed

Election of Next Year's Auditors - John Reid explained the value of changing to different auditors considering that the present people have audited the books for many years. Members, Brad Hornseth and Kendra Frank have expressed interest to audit the financial statements next year. John Reid made the motion to accept Brad and Kendra as Auditors for next year. 2<sup>nd</sup> by Kristen Ritzen-Bennett, passed.

Bylaw changes for next year

Bylaws 4, A, B and C. to include the option of using electronic means of communication. Deb Skeels made the motion to include the option of using electronics as a means of communication to the membership or public, 2<sup>nd</sup> by Gordon Watson, passed.

Bylaw 6E to change the words Administrative Committee to Executive Committee. John Reid made the motion to change the word "Administrative" to "Executive", 2<sup>nd</sup> by Kristen Ritzen-Bennett, passed.

Nominations for new directors

Amy explained that four directors are stepping down this year having served their three year term being Andrew Ritzen-Bennett, Benz Rufenacht, Cy Newsham and Ken Ziegler. Amy also explained that the board has pre-nominated Greg Campkin of the Sundre area and Jess Hudson of the Bashaw area and explained that we can also open the floor for additional nominations.

Maria Champayne nominated Dallas Jensen from east of Rimbey, Dallas accepted.

Kristen Ritzen-Bennett nominates Deb Skeels from the Dovercourt area, Deb accepted.

Amy called for further nominations three times.

Doug Skeels moved that nominations cease, 2<sup>nd</sup> by John Reid, passed.

Moved by Kirsten Ritzen-Bennett that we accept Greg, Jess, Dallas and Deb as new directors, 2<sup>nd</sup> by Gordon Watson, passed.

Farwell to outgoing board members – Andrew Ritzen-Bennett, Benz Rufenacht, Cy Newsham and Ken Ziegler were thanked for their contributions over the past three years.

New Business

10.1 Reasons for staff turnover

A member from the floor asked the Board to explain to the membership why both staff have quit is such a close time frame.

Amy explained the announcement and reasons for Devin leaving, primarily because of a better employment opportunity through the private sector. The Board was surprised and sad that Devin had chosen to leave but also understood the logical reasoning as to why that would be good for him.

Ken explained the surprise announcement of Ginette's resignation of exactly two weeks earlier. Ken explained that there were various dynamics in play that came to her choosing to leave and that the primary conclusion by her was that she sensed disrespect for the hard work she had put into the rebuilding of the forage association over the past two years. Ken further explained that one primary area was where the Board chose to restructure the accountability of staff to the board rather than

the typical model of accountability to a manager. Ginette felt strongly that the Board should have consulted with staff before making such a radical move. She felt this was very disrespectful and had issues getting behind such a restructuring. These explanations seemed to communicate adequately the logic and history of our staff leaving.

Linda Hunt – Did a short presentation on AOF

No comments or questions from Linda Hunt's report

MLA Jason Nixon was introduced and invited to say a few words regarding issues affecting agriculture and general governmental issues at play.

Adjournment- 8:30pm

Cy Newsham moves to adjourn the 2018 AGM, passed



## Resolution One:

*Whereas it may be desirable to extend the amount of time that directors are able to serve on the Board of Directors, we propose the following special resolution to amend the Grey Wooded Forage Association Bylaws:*

Part one: *Eliminate Bylaw 5B:* “One third of the directors shall be elected each year for a 3-year term, after which they must step down for 1 year before being eligible for re-election. “

*Replace it with a new Bylaw 5B:* “Directors may be elected for a term of one to three years, with an option to run for a second term of one to three years, at the board’s discretion. Directors may serve a maximum of two consecutive terms, after which they must step down for at least one year before they can become eligible to run again.”

Part two: *Add the following to Bylaw 5C:* “Vacant positions on the board will be advertised and filled in such a way that there are at least two directors in each of Years One to Three. Directors will automatically rotate to the next year at the end of each fiscal year, with Year Three directors required to step down or seek re-election.”

Example:

2019-20 Board Status		
Year One	Year Two	Year Three
<i>Vacant</i>	Greg Campkin	Dallas Jenson
<i>Vacant</i>	Deb Skeels	Gil Hegel
<i>Vacant</i>	Jess Hudson	<i>Vacant</i>

Justification: Under the current scheme, directors have very little opportunity to advance, while the chain of continuity is broken if large numbers of new directors all leave in the same year. Allowing directors to run for a second term will help maintain that continuity.

## Resolution two:

*Whereas the existing bylaws are not clear concerning the status of the ARECA rep, we propose the following resolution to amend the Grey Wooded Forage Association bylaws:*

Eliminate the existing wording of Bylaw 5D: “The ARECA representative is entitled to vote at board meetings.”

Replace it with: “The Agriculture Research and Extension Council of Alberta (ARECA) representative may be appointed from among the membership and is entitled to vote on all matters put before the Board of Directors.”

[illegible]



**GREY WOODED FORAGE ASSOCIATION**

**BYLAWS**

## **GREY WOODED FORAGE ASSOCIATION BYLAWS**

### **BYLAW 1: MEMBERSHIP**

- A. Membership shall be open to any person interested in forage use and production, who pays the required membership fee.
- B. The membership fee shall be set at an annual meeting.

### **BYLAW 2: VOTING RIGHTS**

- A. Members shall vote in person only.
- B. Members who have paid their membership fee for the year are entitled to vote at Annual, General and Special meetings.
- C. Staff members do not have voting rights.

### **BYLAW 3: RESIGNATION OR EXPULSION OF MEMBERS**

- A. A member may resign by notifying the board by letter, fax or e-mail.
- B. Members who fail to pay membership fees or whose practises bring discredit to the Association shall be asked by the board to resign.

### **BYLAW 4: MEMBERSHIP MEETINGS**

- A. Annual Meeting - on or before June 30 each year
  - (i) Notification – shall be advertised in local newspapers, electronic media and the GWFA Newsletter
  - (ii) Days Notice - 21 days before the meeting
  - (iii) Quorum – 10 members
- A. General Meetings – shall be held at the discretion of the Board of Directors
  - (i) Notification – shall be advertised in local newspapers, electronic media and the GWFA Newsletter
  - (ii) Days Notice - 21 days before the meeting
  - (iii) Quorum – 10 members
- A. Special Meetings - shall be held at the request of any 2 directors or 20 members
  - (i) Notification – shall be advertised in local newspapers, electronic media and the GWFA Newsletter
  - (ii) Days Notice - 21 days before the meeting
  - (iii) Quorum – 10 members
- A. Board of Directors Meetings
  - (i) Notification – at discretion of chair
  - (ii) Quorum – 5 directors

### **BYLAW 5: THE BOARD OF DIRECTORS AND OFFICERS**

- A. Directors shall be elected at the annual meeting by secret ballot.
- B. One third of the directors shall be elected each year for a 3-year term, after which they must step down for 1 year before being eligible for re-election.
- C. The board shall consist of not less than 6 and not more than 10 elected directors.
- D. The ARECA representative is entitled to vote at board meetings.
- E. Appropriate government representatives may be appointed to attend board meetings as advisory directors. Advisory directors are entitled to vote on all but money matters.
- F. The board shall have full control and management of the Association affairs within the limits of the bylaws.
- G. A chair and vice chair shall be elected from the directors at the first board meeting after the annual meeting.
- H. A secretary and treasurer shall be elected from the directors or appointed annually from the membership. They shall not serve more than three consecutive years.
- I. A director or officer may be removed from office by a majority vote at a meeting of the Board of Directors if that person
  - (i) Has been absent from 3 consecutive meetings without notifying the board
  - (ii) Has failed to do the job they've been appointed to do



**BYLAW 6: DUTIES OF THE DIRECTORS AND OFFICERS OF THE BOARD**

- A. The chair shall preside at all general and board meetings and shall report on Association activities at the annual meeting.
- B. The vice chair shall assist the chair as required and preside at meetings in the chair's absence.
- C. The secretary shall take minutes of all meetings and keep them in a safe place.
- D. The treasurer shall be responsible for ensuring all monies received are deposited in a designated bank, cheques are issued as authorized, proper accounts are kept, payrolls are properly prepared, and financial statements and reports are prepared and delivered as required.
- E. Staff shall be employed by the board to co-ordinate and carry out Association activities. The board shall determine staff duties. The staff shall be directly responsible to the executive committee.
- F. Staff shall not be entitled to vote.
- G. The chair, vice chair, secretary and manager shall have signing authority. Any 1 signature shall be valid on cheques, except that the manager shall not sign cheques to the staff. Where appropriate, electronic banking will be used.
- H. The board shall set staff payment.
- I. The executive and board of directors shall not receive payment for their duties.
- J. Honoraria may be paid at the discretion of the board.

**BYLAW 7: COMMITTEES**

- A. Committees shall be appointed from the board as required.

**BYLAW 8: BORROWING POWERS**

- A. The Association shall not borrow money without a special resolution of the Association.
- B. The Board shall authorize financial arrangements with the designated bank when approved funds have not arrived in time to honor financial commitments.

**BYLAW 9: FISCAL YEAR AND AUDIT OF ACCOUNTS**

- A. The Association fiscal year is from April 1 to the following March 31.
- B. The Association accounts shall be audited annually.
- C. Two members of the Association shall be appointed each year at the Annual Meeting to audit the Association accounts.
- D. The treasurer shall present the annual audit at the annual meeting.

**BYLAW 10: ASSOCIATION SEAL**

- A. If a seal is obtained, it shall be kept and used by the administrative committee.

**BYLAW 11: BYLAW CHANGES**

- A. The Association shall make, amend or rescind bylaws by a special resolution at an annual meeting or special general meeting called for that purpose.
- B. A "special resolution" is a motion passed by a 75% majority vote at a general meeting for which at least 21 days' written notice of motion has been given to the membership.

**BYLAW 12: ASSOCIATION RECORDS**

- A. Past Association minutes and account books shall be kept by the manager in a designated place.

**BYLAW 13: INSPECTION OF RECORDS**

- A. The Association's books and records may be inspected by members at any time, with reasonable notice to the officers.

NOTES



NOTES



# Grey Wooded Forage Association

*Creating an Awareness of Forages*

## 2019/20 Membership Application Form

**Membership in the GWFA is open to anyone interested in forage production, grazing management and environment sustainability**

**The fee is \$40 per year, running from April 1 to March 31**

**For information, call 403-844-2645 or email [gwfa3@telus.net](mailto:gwfa3@telus.net)**

### Benefits of joining GWFA:

- ♦ Discounts on courses, seminars, workshops and tours.
- ♦ An automatic subscription to *The Blade*, published monthly online. Hard copy is available on request.
- ♦ Assistance with your Environmental Farm Plan.
- ♦ Equipment rental (deposit required).
- ♦ Access to our reference library.
- ♦ Access to our members-only Facebook group.
- ♦ Networking with like-minded producers and advisors.
- ♦ Farm consultation services (farm calls are 55 cents per kilometre, each way).
- ♦ A copy of the GWFA Annual Report.

.....  
**Please mail your completed form and cheque to:**

***Grey Wooded Forage Association***

***PO Box 1448, Rocky Mountain House, AB T4T 1B1,***

**Or scan and email the completed form and send an e-transfer to [gwfa3@telus.net](mailto:gwfa3@telus.net)**

Renewal ☐ New member ☐

How should we send your copy of *The Blade*: Email ☐ Canada Post ☐

Name:

Email:

Mailing address:

Landline:

Cell:

### **\*How do you describe your operation (tick all that apply)**

- ☐ Beef producer
- ☐ Sheep/goat\ producer
- ☐ Dairy producer
- ☐ Annual crops producer
- ☐ Forage producer
- ☐ Other \_\_\_\_\_

### **\*How many head of livestock do you manage:**

Beef cows/heifers  
Dairy cows  
Feeders  
Ewes  
Does  
Other

### **\*How many acres of land do you manage:**

Pasture  
Hay  
Crop  
Other

*\*These questions are voluntary.  
We do not share your information*

How can we improve our service to you?

Please suggest topics you would like to learn more about: